

# SFLS LED

LED sequenced flashing lighting system - Airsafe



**Airsafe**

**Contact details:**



E-mail: [aes@aes-europe.com](mailto:aes@aes-europe.com)



Phone Number:  
+00376 665572



## Compliance

- ICAO Annex. 14, Vol. I
- FAA AC 150/5345-51B
- FAA E-2628B
- IEC 61827
- EASA: CS-ADR-DSN.
- STANAG 3316

## Uses

LED approach sequenced flashing lighting system for airports CAT I, II & III according FAA E-2628B and ICAO annex 14 Vol.I.

## Features

- Unit control is integrated into light, which has compact structure.
- Main body of the lighting fixtures is made of aluminium alloy material with anti-corrosion surface treatment and all fasteners are made of stainless steel.
- The main control cabinet and all unit cabinets have CPU, which works independently and collaborative cooperation is achieved through the BUS communication.
- LED flash has low power consumption and high power factor
- An eventual failure will not result in breakdown of system, ensuring reliable system operation.
- Monitoring system achieves remote control and uploads of operation status.
- Circuits, power and communication cables are equipped with lightning protection, conforming FAA requirements.
- Elevated lights for mounting on 1" or 2" frangible tube.
- Precision machined on fixing elements to meet ICAO and FAA frangibility requirements.
- Photometry and chromaticity according to requirements of sequenced flashing systems of the FAA E-2628.

## Specifications

- Power: 230V-50Hz / 400V-50Hz.
- Color: White.
- Consumption: Elevated unit 44VA / Inset unit 72VA
- Index Protection: IP67.

## Contact details:



E-mail: [aes@aes-europe.com](mailto:aes@aes-europe.com)



Phone Number:  
+00376 665572



## Order Code

SFLS-LED-X1-X2-X3-X4-X5

SFLS-LED: LED Elevated Flashing Light

X1: Power Supply

IP = Single-phase power supply

X2: elevated light/insert light

02/05:2 elevated light/5 insert light

19/02:19 elevated light/2 insert light

.....

30/00:30 elevated light/0 insert light

X3: Communication Mode

CAN = CAN communication (with main control cabinet)

X4: Flashing Frequency

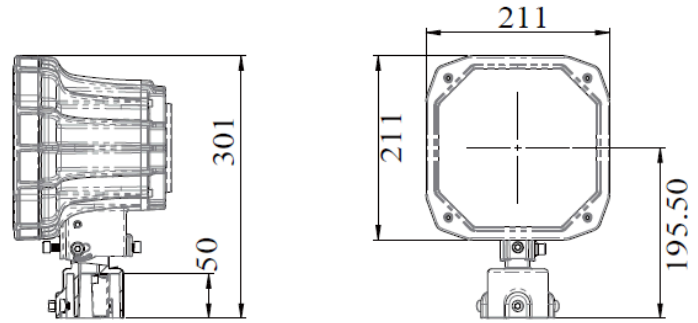
01:1Hz

02:2Hz

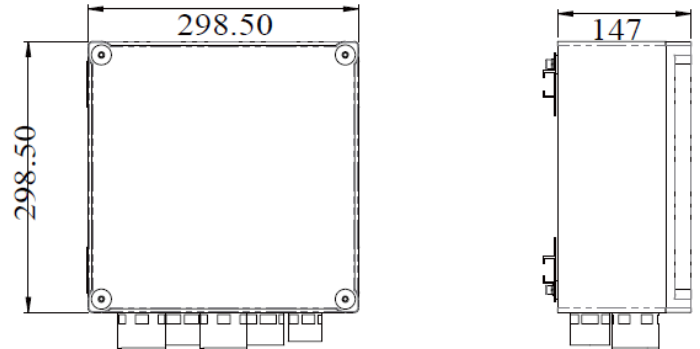
X5: Optional Function

B: including unit wiring box

## Dimensions



Dimension of Elevated Flashing light



Dimension of the unit wiring box

## Installation

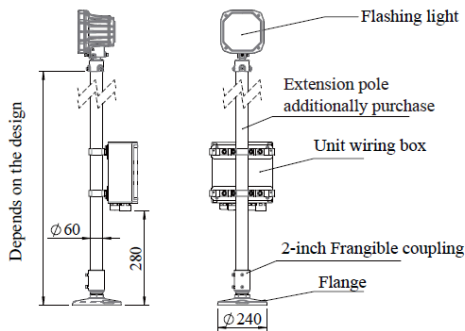


Figure 1-1.

Elevated flashing light with upright pole installation  
Unit wiring box with backpack type installation

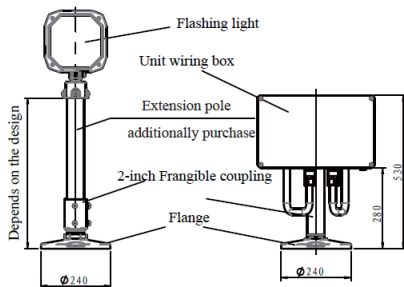


Figure 1-2.

Elevated flash light with upright pole installation  
Unit wiring box with supporting pole installation

## Contact details:



E-mail: [aes@aes-europe.com](mailto:aes@aes-europe.com)



Phone Number:  
+00376 665572